

PAVILION SQUARE

KUALA LUMPUR

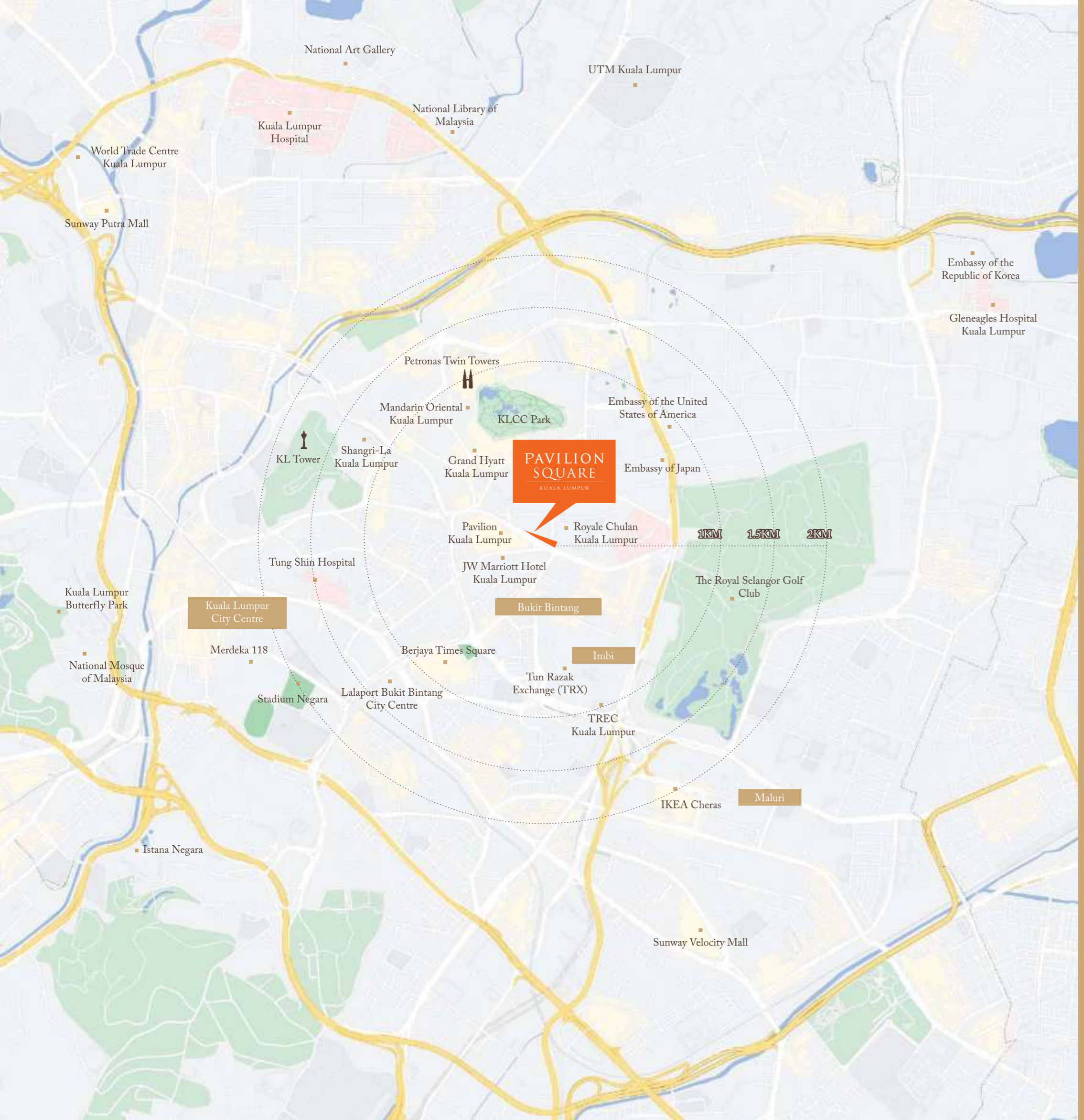
LUXURY RESIDENCES

An aerial photograph of Kuala Lumpur, Malaysia, during sunset. The sky is a mix of deep blue and vibrant orange. The city is densely packed with skyscrapers, many of which are illuminated with warm lights. The Petronas Twin Towers are prominent in the center-right. The overall scene is a panoramic view of a modern metropolis.

PAVILION SQUARE

THE EPICENTRE OF KUALA LUMPUR

Situated in the vibrant heart of Malaysia, Pavilion Square is a melting pot of cultures where lives intersect, fostering a community of visionaries from all walks of life. This prime location is home to the best this city has to offer.



PRIME RESIDENCE IN THE
HUB OF URBAN PULSE

Located strategically in the Golden Triangle, Pavilion Square offers seamless access to amenities and landmarks, embodying convenient uptown living.

MALLS

- Pavilion Kuala Lumpur
- Suria KLCC
- The Starhill
- Fahrenheit88

FITNESS AND RECREATION

- The Royal Selangor Golf Club
- KLCC Park
- KL Forest Eco Park

LANDMARKS

- KL Tower
- Petronas Twin Towers
- Merdeka Square
- Merdeka 118
- Tun Razak Exchange (TRX)

TRANSPORTATION HUBS

- Bukit Bintang MRT Station
- Conlay MRT Station
- Bukit Bintang Monorail Station

MEDICAL

- Prince Court Medical Centre
- Tung Shin Hospital
- Kuala Lumpur Hospital

EDUCATION

- EtonHouse Malaysia
- St. John's International Primary School and Secondary School
- The International School of Kuala Lumpur





YOUR ENTRY TO
REFINED SOPHISTICATION



Pavilion Square is the latest addition to Pavilion Group's luxury lifestyle developments. Enhanced by its unique facade and meticulously crafted masterplan. Pavilion Square, where you can truly feel at home.

67 storeys

960 units

Luxury residences ranging from cosy 504 sq.ft. studios to practical 1,272 sq.ft. suites

Dedicated link-bridge to Pavilion Kuala Lumpur

SEAMLESSLY CONNECTED TO
PAVILION
KUALA LUMPUR

Access lifestyle amenities seamlessly with Pavilion Square's dedicated link-bridge to Pavilion Kuala Lumpur.



A MAJESTIC LOBBY

FOR THE ELITES

Step into Pavilion Square's grand lobby, its majestic design and lavish finishes promise an upscale living experience right from the start.



*OVER
70,000 SQ.FT.*

OF DIVERSE LIFESTYLE FACILITIES

Courtyard Garden at Level 12 features versatile indoor and outdoor spaces such as the Function Room, Entertainment Room, and BBQ Deck, perfect for gatherings and creating memories with friends and family.



Water Feature and Plaza

A SANCTUARY

ABOVE THE CITY

Uncover the essence of luxury at Pavilion Square's exclusive sky facilities, an elevated sanctuary offering a harmonious blend of modern elegance and peaceful retreat amid the bustling cityscape, perfect for relaxation and enjoyment.

118m
Sky Pool

Level 67

Sky
Garden

Level 66

15,000 sq.ft.
Sky Wellness

Level 63A



DISCOVER THE
LONGEST SKY POOL
IN THE HEART
OF KUALA LUMPUR

UNWIND IN OUR

118-METRE INFINITY POOL

67 storeys above Kuala Lumpur, our rooftop infinity pool offers breathtaking views of the city. Relax and enjoy the longest rooftop infinity pool in Kuala Lumpur City Centre at Pavilion Square.





SKY GARDEN IN THE CLOUDS

AT THE PINNACLE OF LEVEL 66

Rejuvenate in our Sky Garden, escape to lush greenery and fresh air in the heart of the bustling city.

THE LARGEST SKY WELLNESS IN KUALA LUMPUR CITY CENTRE

15,000 SQ.FT. OF FITNESS FACILITIES AT LEVEL 63A

Elevate your fitness journey at the highest and largest Sky Wellness floor in Kuala Lumpur City Centre, featuring a fully-equipped indoor and outdoor gym with branded equipment, complemented by steam and sauna amenities. Recover in the Sports Lounge post-workout for ultimate relaxation.



OVERALL
SITE PLAN



FACILITIES

FLOOR PLAN

LOBBY

LEVEL 1



- 1 Retail
- 2 Lobby
- 3 Concierge
- 4 Waiting Lounge
- 5 Mail Room
- 6 Washroom
- 7 Management Office
- 8 Security Room
- 9 Lift Lobby
- 10 Collection Room

COURTYARD GARDEN

LEVEL 12



- 1 Access to Link-bridge
- 2 Water Feature and Plaza
- 3 Serene Trail
- 4 The Promenade Walkway
- 5 Garden Terrace
- 6 Yoga Deck
- 7 Seating Courtyard
- 8 The Retreat
- 9 Club Lounge
- 10 Lift Lobby
- 11 Outdoor Lounge
- 12 Multi-purpose Hall
- 13 Pre-function Room
- 14 Washroom
- 15 Landscape Terrace
- 16 Karaoke Room*
- 17 Foosball Table
- 18 Pool Table
- 19 Entertainment Room
- 20 Mahjong Room
- 21 Snooker Table
- 22 Lounge Area
- 23 BBQ Deck
- 24 Operation Office*
- 25 Laundromat*
- 26 Indoor Kids Room
- 27 Kids Playground
- 28 Surau

*Note: Facilities space only

SKY WELLNESS

LEVEL 63A



- 1 Outdoor Yoga Deck
- 2 Gymnasium (Cardio & Strength Training)
- 3 Lift Lobby
- 4 Sports Lounge
- 5 Outdoor Lounge
- 6 Washroom
- 7 Lockers
- 8 Sauna
- 9 Steam Room
- 10 Changing Room
- 11 Gymnasium (Functional Training)
- 12 Facilities Lift (Level 66 & 67)
- 13 Gymnasium (Cardio & Functional Training)
- 14 Outdoor Gymnasium

SKY GARDEN

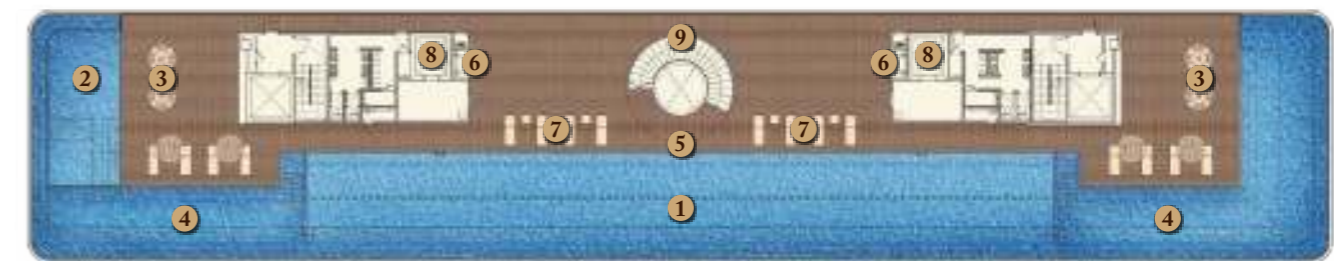
LEVEL 66



- 1 Co-working Lounge
- 2 Indoor Lounge
- 3 Reading Court
- 4 Sunken Plaza and Viewing Deck
- 5 Facilities Lift (Level 66 & 67)
- 6 Washroom
- 7 Sky Plaza
- 8 Spiral Staircase

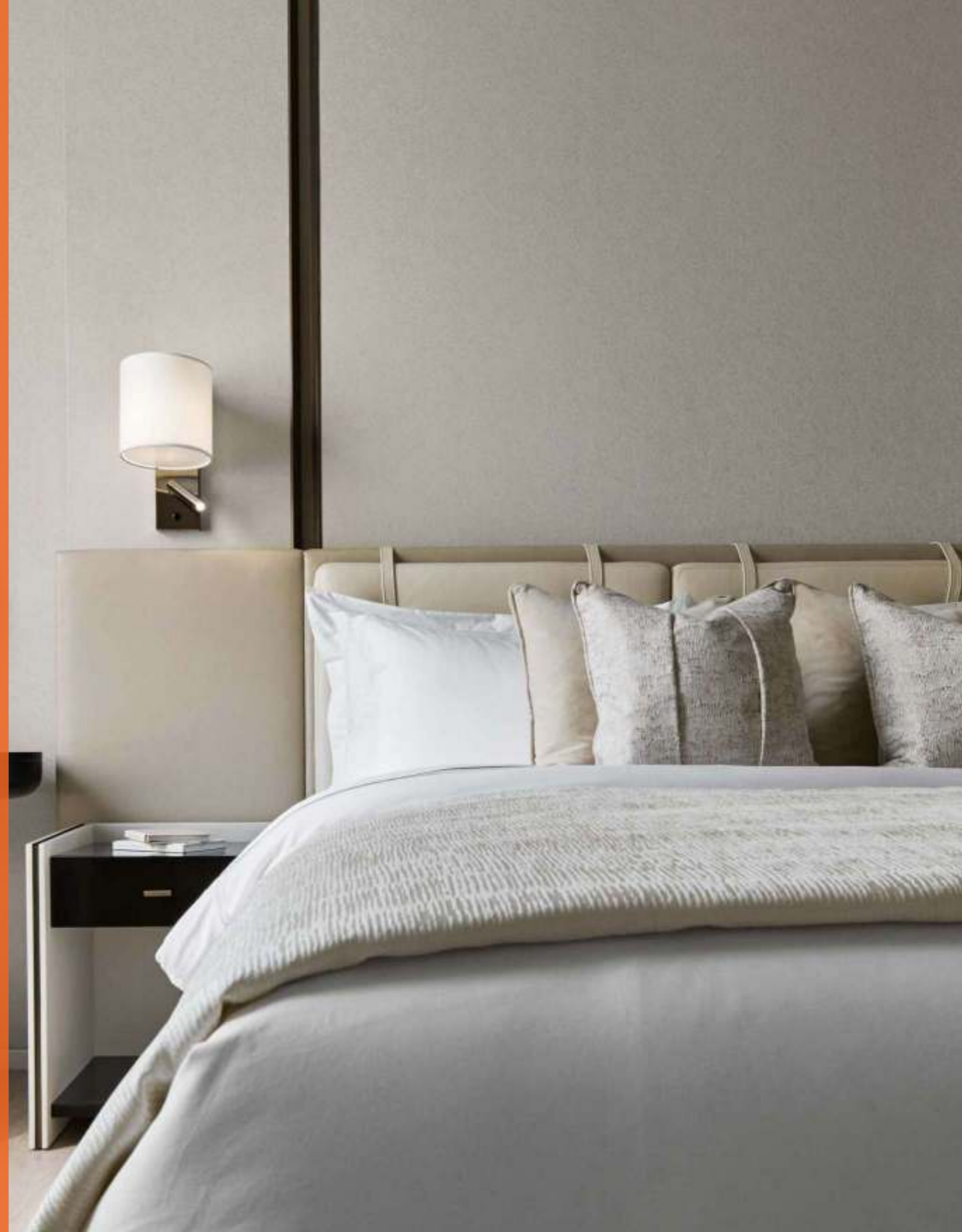
SKY POOL

LEVEL 67



- 1 Infinity Pool
- 2 Kids Pool
- 3 Table and Seating Area
- 4 Wading Pool/Jacuzzi
- 5 Pool Deck
- 6 Outdoor Shower
- 7 Sun Loungers
- 8 Facilities Lift (Level 66 & 67)
- 9 Spiral Staircase

REFINED
LIVING EXPERIENCE



STEP INTO LUXURY

FULLY FURNISHED DESIGN SUITES

With practical layouts and thoughtful space planning, Pavilion Square suites offer the perfect blend of convenience and comfort. Enjoy the fully fitted kitchen equipped with modern appliances, and unwind in a beautifully furnished bedroom that welcomes you home to serenity and elegance everyday.



Master Bathroom



Kitchen



Master Bedroom



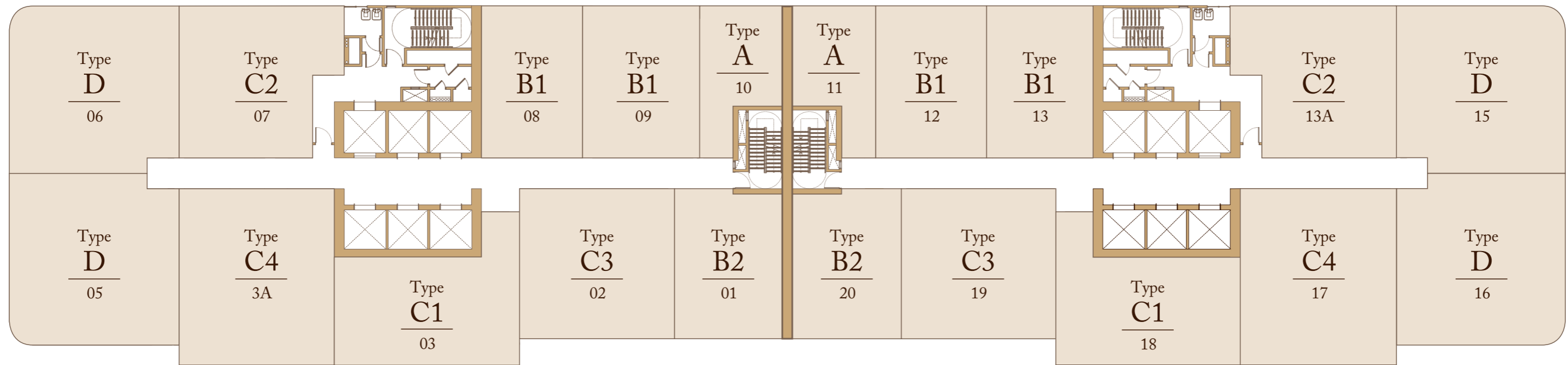
PICTURE PERFECT

VIEWS FROM THE COMFORT OF HOME

Step out onto your private balcony, a space for fresh air and enjoy Kuala Lumpur's iconic skyline. This outdoor extension of your living area offers a peaceful retreat where you can unwind and recharge everyday.

TYPICAL FLOOR LAYOUT

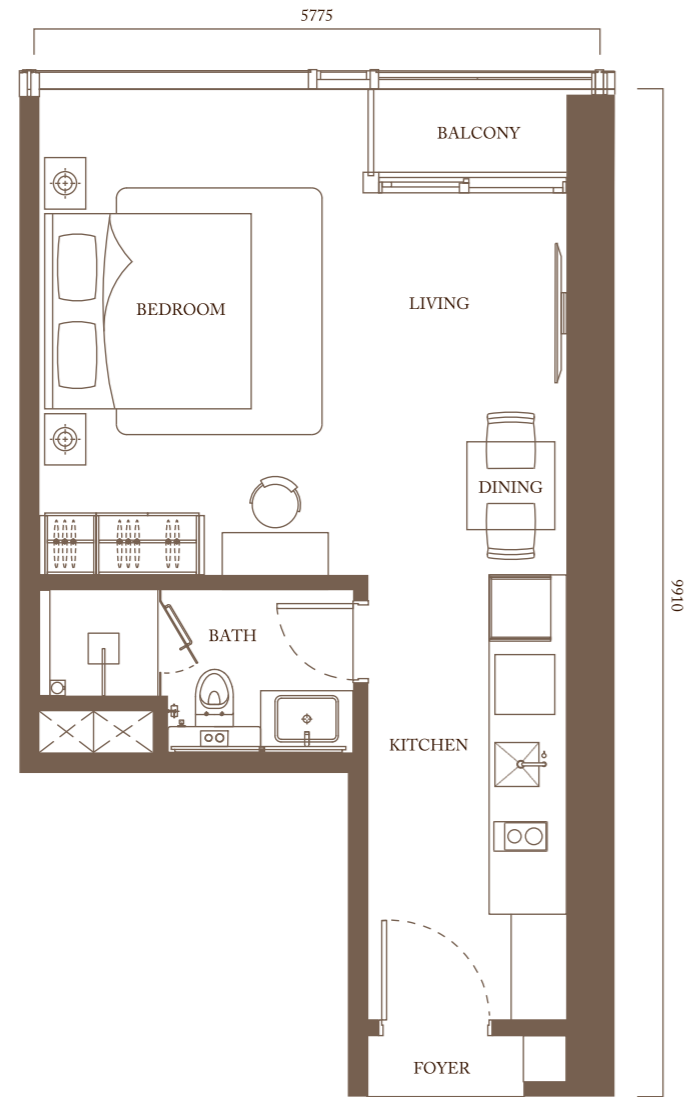
Level 13A-37 & Level 39-62



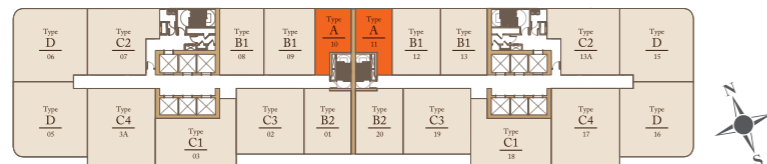
TYPE A

STUDIO

504 sq.ft. (46.8 sq.m.)



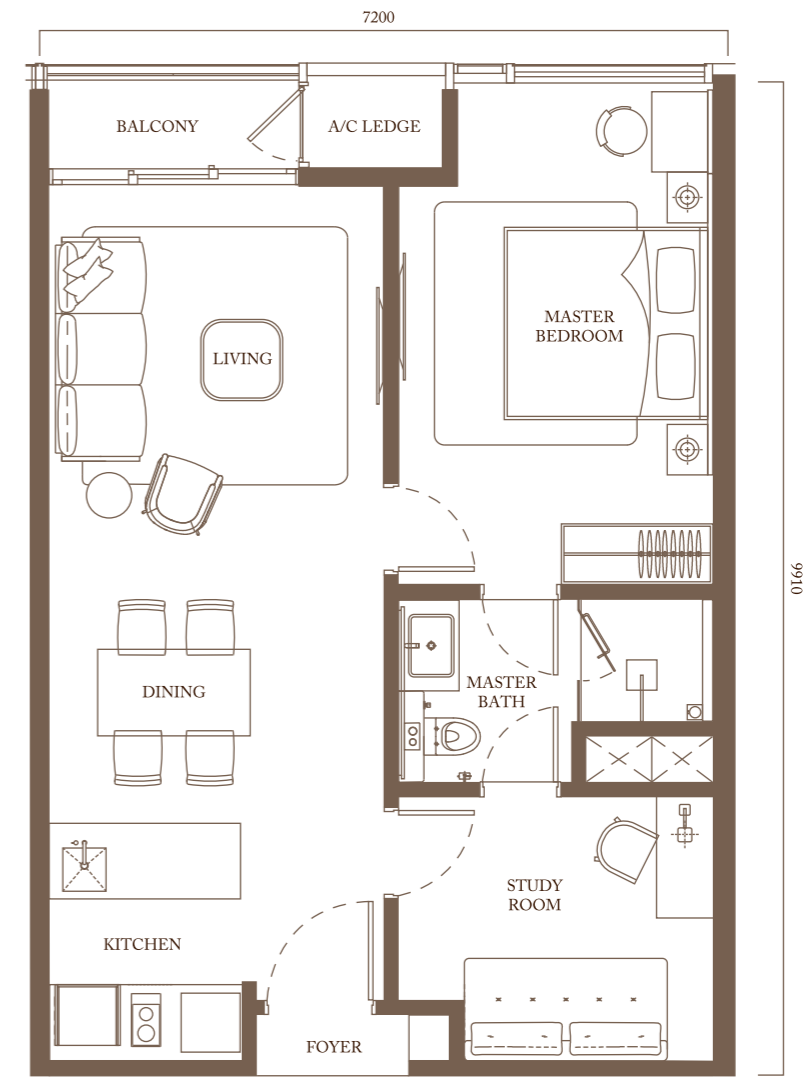
Level 13A-37 & Level 39-62



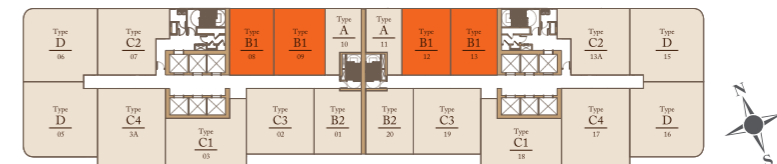
TYPE B1

1 BEDROOM + STUDY

770 sq.ft. (71.5 sq.m.)

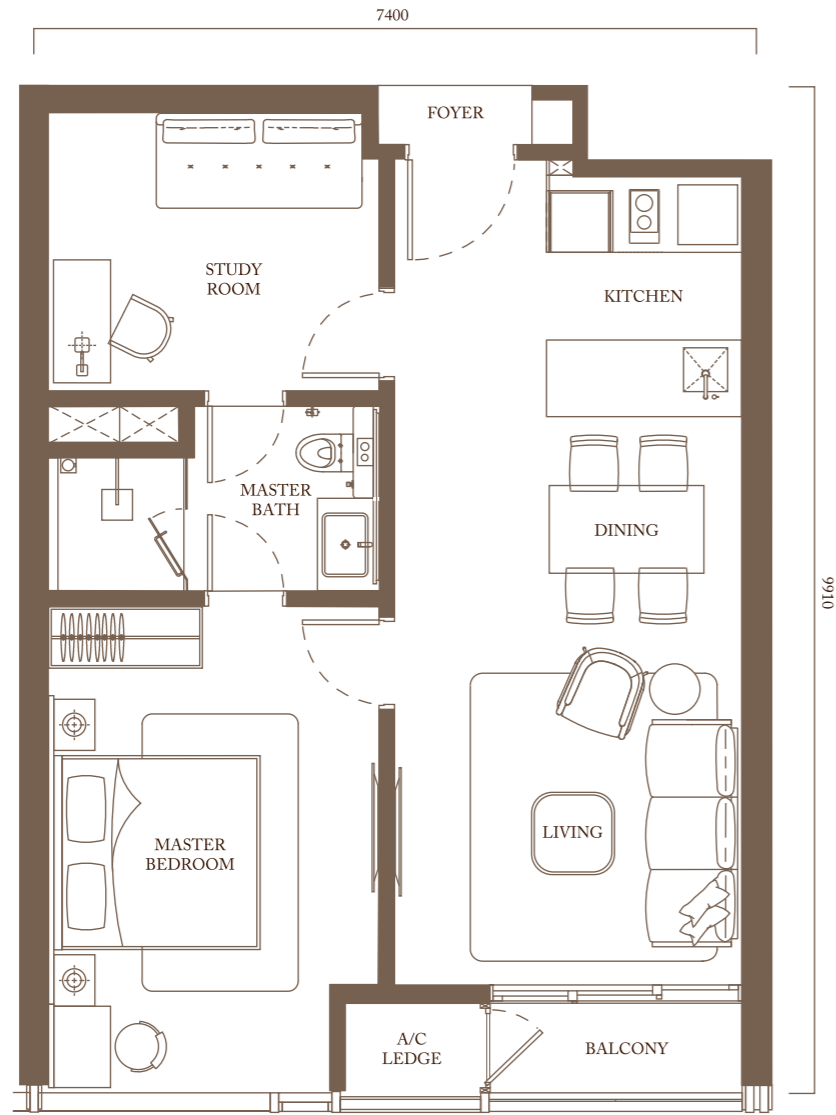


Level 13A-37 & Level 39-62

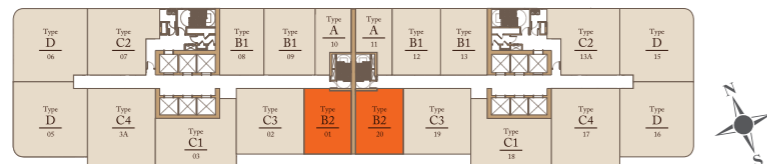


TYPE B2

1 BEDROOM + STUDY
772 sq.ft. (71.7 sq.m.)

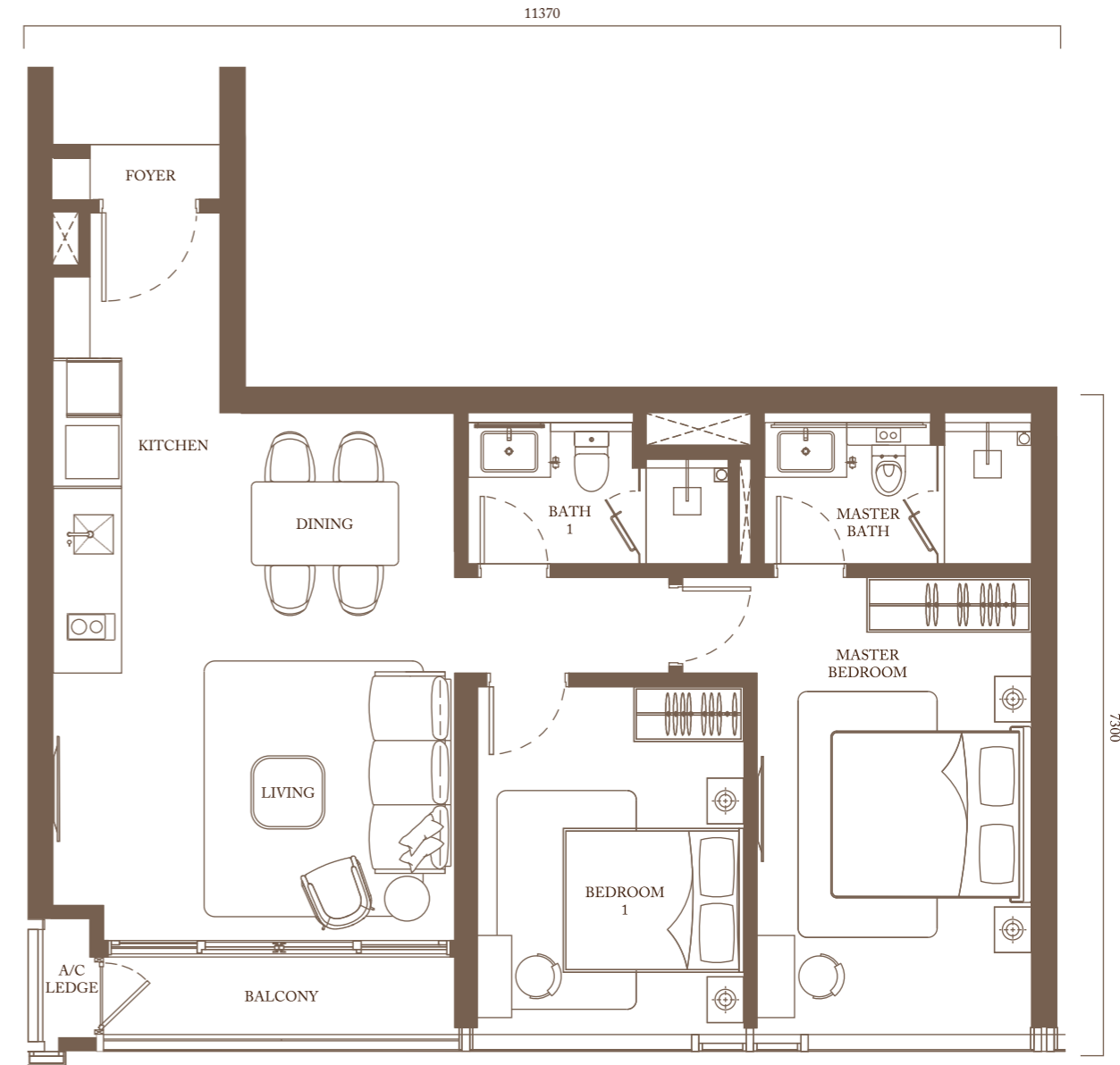


Level 13A-37 & Level 39-62

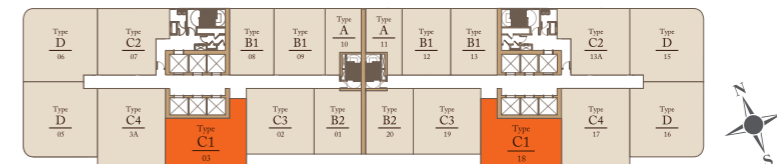


TYPE C1

2 BEDROOMS
966 sq.ft. (89.7 sq.m.)



Level 13A-37 & Level 39-62

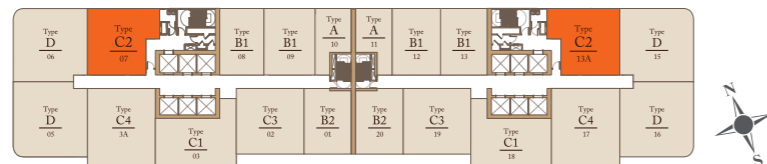


TYPE C2

2 BEDROOMS + STUDY
978 sq.ft. (90.9 sq.m.)

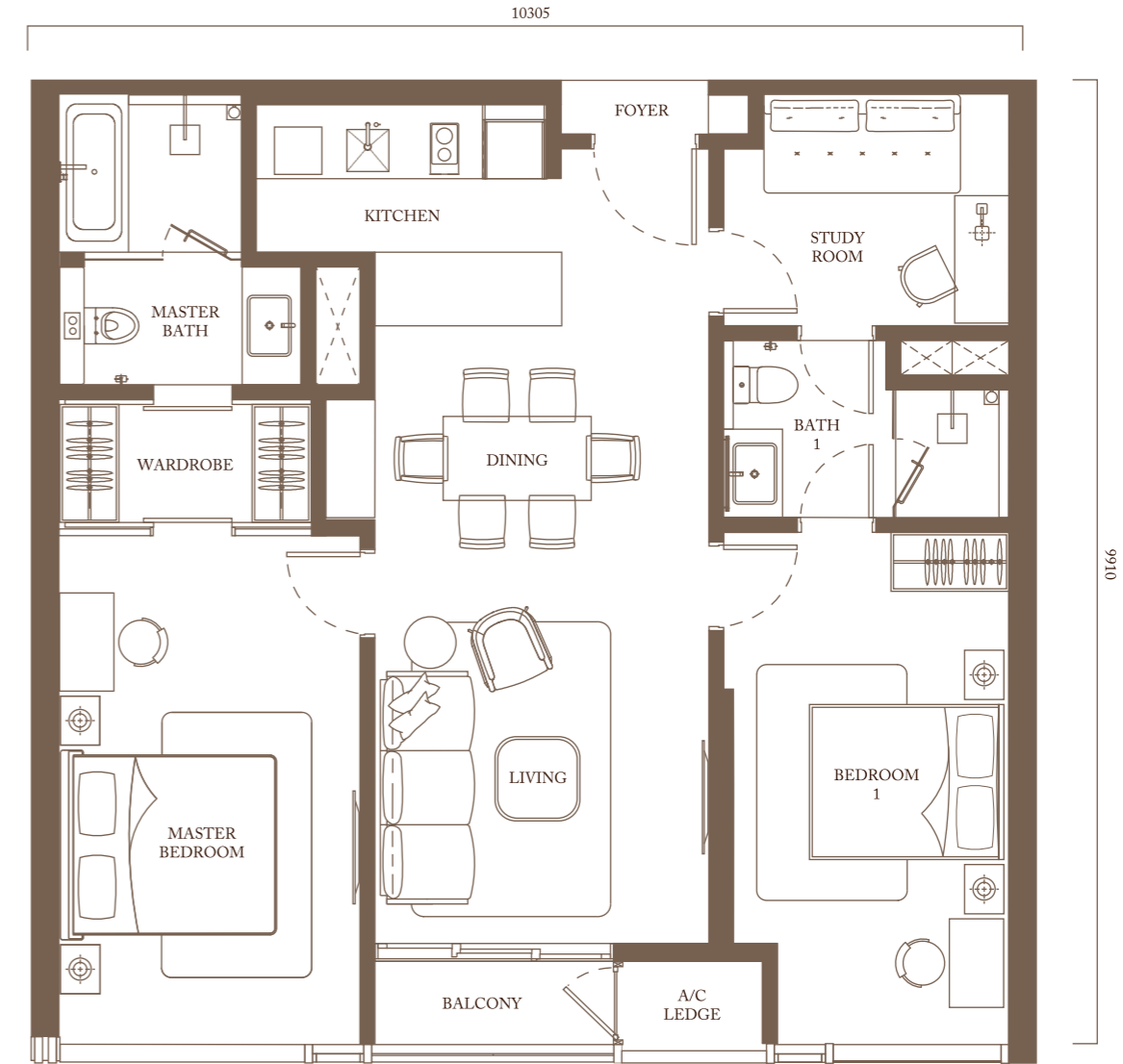


Level 13A-37 & Level 39-62

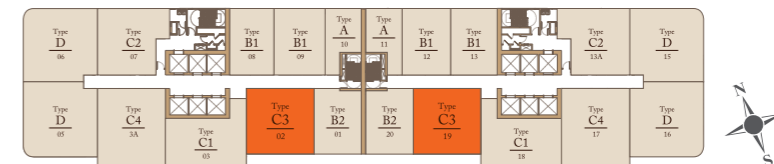


TYPE C3

2 BEDROOMS + STUDY
1,100 sq.ft. (102.2 sq.m.)

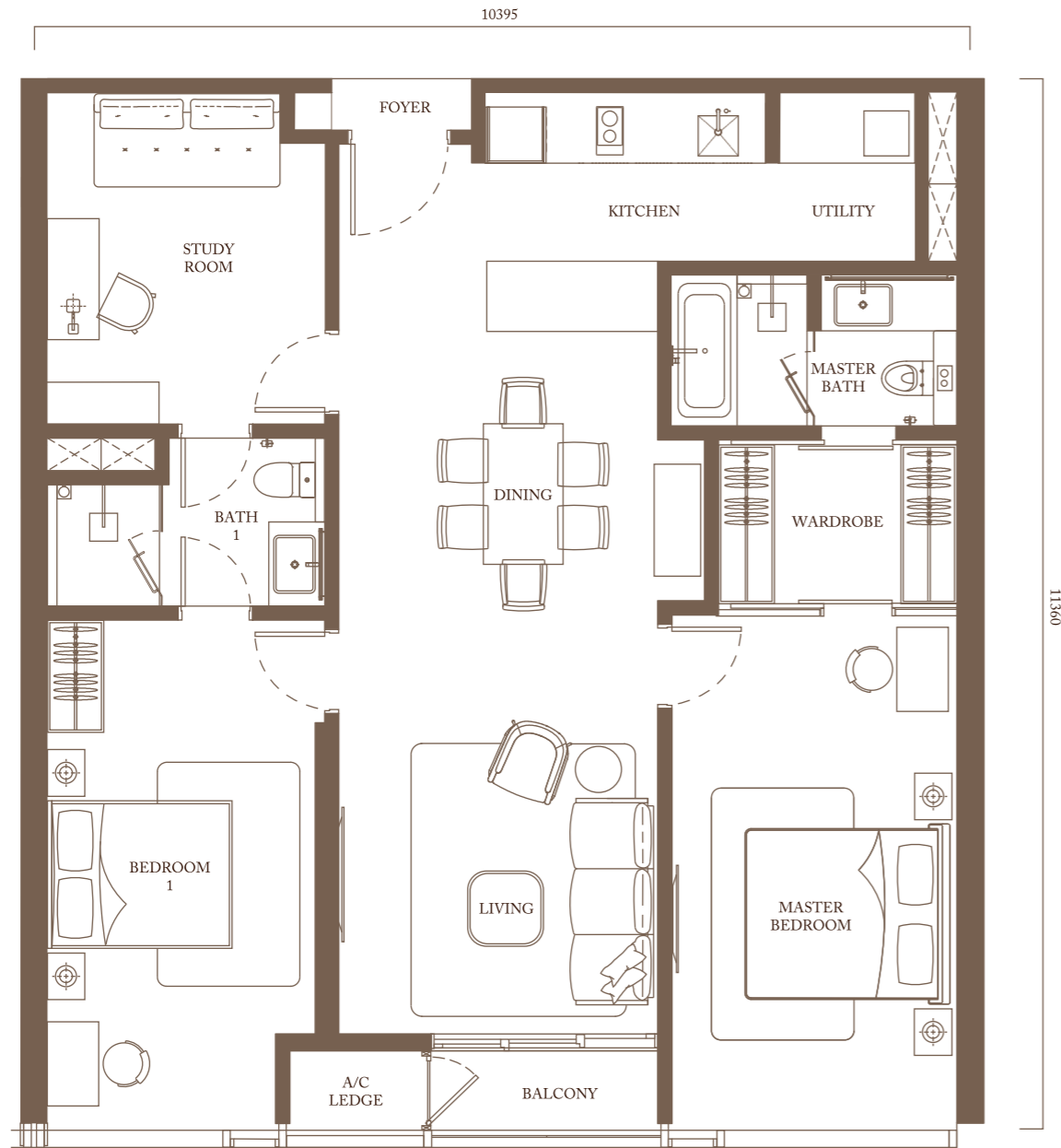


Level 13A-37 & Level 39-62

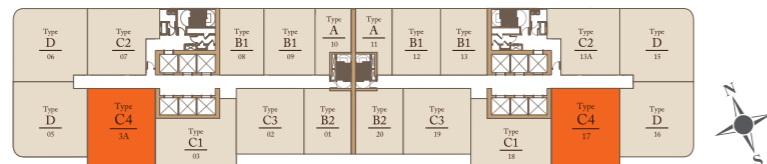


TYPE C4

2 BEDROOMS + STUDY
1,272 sq.ft. (118.2 sq.m.)

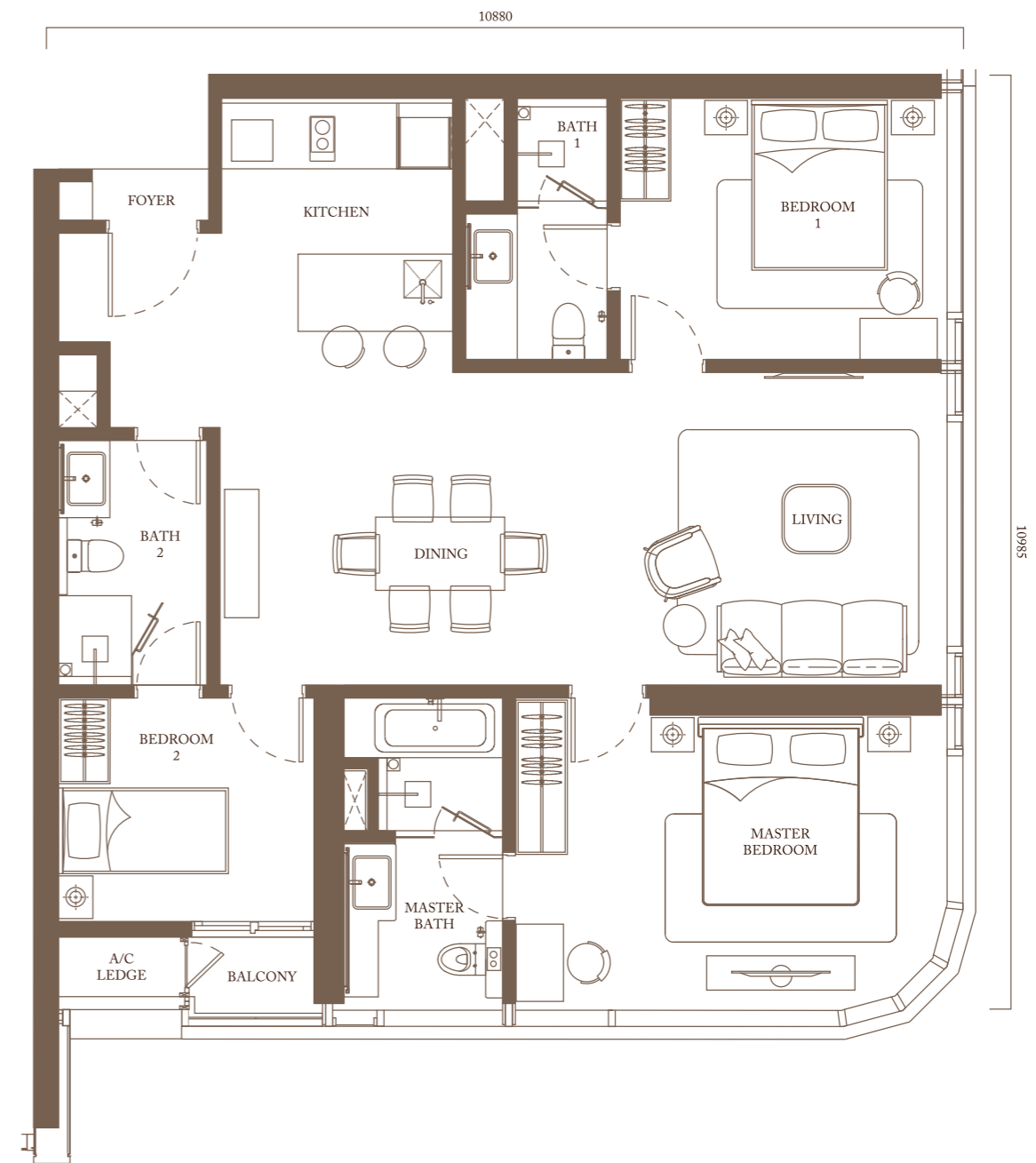


Level 13A-37 & Level 39-62

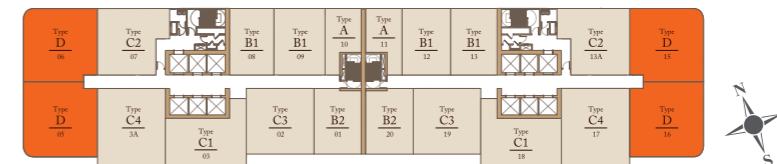


TYPE D

3 BEDROOMS
1,255 sq.ft. (116.6 sq.m.)



Level 13A-37 & Level 39-62



SPECIFICATIONS

Structure	Reinforced Concrete Framework	
Roofing	Reinforced Concrete Slab	
Wall	Shear Wall/Masonry Wall (where applicable)	
Ceiling	Foyer/Living & Dining/Master Bedroom/ Bedroom 1/Bedroom 2/Master Bathroom/ Bath 1/Bath 2/Study/Kitchen/Balcony	Plaster Ceiling Board & Paint
	A/C Ledge	Skim Coat & Paint
Doors	Entrance Door	Quality Fire Rated Door
	Internal Door	Quality Timber Door
	Balcony Door	Quality Aluminium Framed Sliding Glass Door
Ironmongery	Quality Locksets & Accessories	
Windows	Aluminium Framed Glass Window	
Wall Finishes	Foyer/Living & Dining/Master Bedroom/ Bedroom 1/Bedroom 2/Study/Kitchen (where applicable)	Skim Coat & Paint
	Master Bathroom	Compressed Stone
	Bath 1/Bath 2 (where applicable)	Porcelain Tiles
	Balcony/A/C Ledge	Plaster & Paint
	Floor Finishes	Foyer/Living & Dining
Floor Finishes	Master Bedroom/Bedroom 1/Bedroom 2/ Study (where applicable)	Engineered Timber
	Master Bathroom/Kitchen	Compressed Stone
	Bath 1/Bath 2/Balcony (where applicable)	Porcelain Tiles
	A/C Ledge	Cement Render
Sanitary Wares & Fitting	Quality Sanitaryware & Fitting, Quality Vanity Top	

LOCATION MAP



Developer's License No: 30633/11-2028/0308(A) • Validity Period: 01/12/2023 – 30/11/2028 • Advertising Permit: 30633-1/08-2027/0740(N)-(S) • Validity Period: 16/08/2024 – 15/08/2027 • Approving Authority: Dewan Bandaraya Kuala Lumpur
 • Reference No: BP T3 OSC 2023 1113 (18) • Land Tenure: Leasehold (04 October 2122) • Lease Term: 99 Years • Expected Date of Completion: Q3 2029 • Restrictions: The land cannot be transferred, leased, or mortgaged without any consent from the Land Committee of Kuala Lumpur, Federal Territory • Land Encumbrances: OCBC Bank (Malaysia) Berhad • Type of Property: Serviced Apartment • Development Name: Pavilion Square Kuala Lumpur (Dataran Pavilion)
 • Car Park: 762 • Type A: 504 sq.ft., Type B1: 770 sq.ft., Type B2: 772 sq.ft., Type C1: 966 sq.ft., Type C2: 978 sq.ft., Type C3: 1,100 sq.ft., Type C4: 1,272 sq.ft., Type D: 1,255 sq.ft. • Total Units: 960 • Price: RM1,319,000 (Min) – RM5,409,000 (Max)
 • Discount for Bumiputera: 5%

THIS ADVERTISEMENT HAS BEEN APPROVED BY NATIONAL HOUSING DEPARTMENT

All renderings contained in this brochure are artist's impression only. The views as shown herein are perspectives only and do not represent the actual view of all units. The fittings, furnishings, furniture, and appliances in this brochure are not included unless expressly specified in the offer or contract. The brand, model, and other specifications are for illustration purposes only. Whilst reasonable care has been taken in preparing this brochure, the developer does not give any representation or warranty whether expressed or implied as to its accuracy and completeness. Neither this brochure nor any information contained herein shall form part of any offer or contract.

ANOTHER PRESTIGIOUS PROJECT BY
PAVILION GROUP



Known for its impressive collection of premium property developments, the Pavilion Group has become a household name synonymous with prestige and luxury. Pavilion Kuala Lumpur, the Pavilion Group's most distinguished development to date, has received numerous local and international awards over the years and continues to draw accolades to this day. A landmark in its own right, this iconic retail haven, which houses an array of international luxury brands and eateries, invites visitors to an unparalleled shopping experience.
